



PURPOSE: Many of the experiences and learning opportunities that shape a child's life occur outside of the classroom in our communities. Science tells us that children develop the capabilities they need to overcome challenges through connections with caring and competent adults. **Graduate Strong is a community response designed to help students develop the capabilities, connections, and the credentials they need to flourish.**



MISSION
To strengthen our community by reducing gaps in educational opportunity and increasing post-secondary enrollment and completion

Focus Areas

Utilizing strengths-based approaches to increase school and community capacity in the Kitsap region around:

- Trauma Sensitive Schools
- Attendance
- Discipline Policies and Restorative Practices
- Hope and Resilience Building through Mentorship
- Future Bound Action: College Bound Sign-Ups, Internships, Dual Credit Enrollment, and Financial Aid Completion
- Credentials: Technical, 2-year, and 4-year Enrollment
- College Persistence

VALUES

Guide our bold and courageous approach to the work. We are ambitious and optimistic in our collective action for student success.

Equity. An inclusive person-centered approach that focuses on populations that have historically been furthest from opportunity.

Responsibility. Shared accountability that brings community and schools together.

Transparency. Research-based and driven by disaggregated data shared to influence and improve outcomes for ALL our youth.

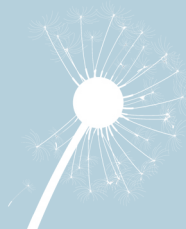
Community. Our community has strengths and resources to help ALL students flourish.

Resiliency. Building resiliency over time through positive experiences and relationships.

Innovation. Test and try new ideas and actions, sometimes emphasizing learning over outcomes.

Contact Us

Alyson Rotter, Network Manager
alyson.rotter@kitsapstrong.org
360.609.3540



Leadership Council

- **Peter Bang-Knudsen**, Superintendent
Bainbridge Island School District
- **Aaron Leavell**, Superintendent
Bremerton School District
- **David McVicker**, Superintendent
Central Kitsap School District
- **Joe Davalos**, Superintendent
Chief Kitsap Academy
- **Laurynn Evans**, Superintendent
North Kitsap School District
- **Dana Rosenbach**, Superintendent
North Mason School District
- **Karst Brandsma**, Superintendent
South Kitsap School District
- **Marty Cavalluzzi**, President
Olympic College
- **Kol Medina**, President & CEO
Kitsap Community Foundation
- **David Emmons**, Executive Director
Olympic College Foundation
- **Carl Borg**, Executive Director
United Way of Kitsap County
- **Bishop Larry Robertson**
New Life Community Development
- **Jay Mills**, Ambassador
Port Madison Enterprises
- **John Powers**, Executive Director
Kitsap Economic Development Alliance

Steering Committee

- Bainbridge Island School District
- Bremerton School District
- Central Kitsap School District
- Fetu Ta'iala Project
- Kitsap Regional Library
- North Kitsap School District
- North Mason School District
- New Life Community Development
- Olympic College
- Olympic Educational Service District 114
 - *Early Learning & Student Support Services*
- South Kitsap School District
- United Way of Kitsap County
- Washington Communities for Children
- Westsound STEM Network
- Westsound Technology Skills Center

Network Partners

