



KITSAP *strong*

2013-2017 | 4-YEAR REPORT

BILL & MELINDA
GATES *foundation*



KITSAP
COMMUNITY
FOUNDATION



United Way of Kitsap County



THE SUQUAMISH TRIBE



PHILANTHROPY
NORTHWEST



CHI Franciscan Health



KITSAP PUBLIC
HEALTH DISTRICT



OLYMPIC COLLEGE

Kitsap Strong is a network of leaders collaboratively implementing a theory of community improvement grounded in NEAR (neuroscience, epigenetics, ACEs, resiliency) science and equity.

Our funders make the difference

Bill & Melinda Gates Foundation

Kitsap Community Foundation

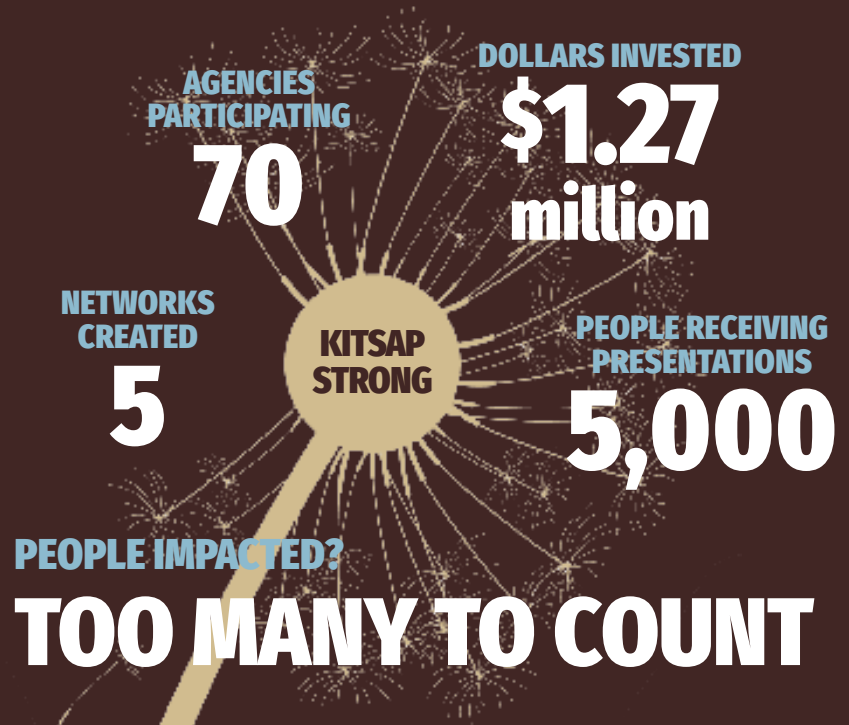
The Suquamish Tribe

United Way of Kitsap County

Kitsap Public Health District

Olympic College

CH Franciscan





Resilience:

BUILDING HOPE

By building relationships, cultivating self care, and the development of adaptive coping skills, we can transform a potentially toxic event into a tolerable one.

ACEs (Adverse Childhood Experiences)

ACEs are a set of traumatic experiences that can be “toxic” to our brains and bodies – leading to increased social, emotional, mental, physical, & behavioral health challenges, relationship disruption, difficulty with work, and can make parenting much more difficult. The more ACEs a person has experienced, the greater the risk of social and health challenges across the life-span.

The 10 ACEs are: physical, sexual, or verbal abuse, physical and emotional neglect, witnessing a domestic violence, losing a parent to separation or divorce, or having a family member who is: experiencing mental health issues, struggling with substance abuse, or in prison.

➡ **37% of Kitsap residents reported having 3 or more ACEs.***

Kitsap Strong Common Agenda

Improve the well-being and educational attainment of Kitsap residents, through a focus on empowerment and equity, the prevention of ACEs, and the **building of resilience**.

*Based on BRFSS data from 2011.

Kitsap Strong timeline

The **Commission on Children and Youth** and **Washington Family Policy Council** support resiliency building efforts with youth through the “It’s Time for Kitsap Kids” campaign.

In 2011, the **Kitsap Community Health Priorities (KCHP) Summit**, ACEs identified as a major health concern in the community and **ACEs Partnership** forms – a group of community leaders passionate about educating our community about ACEs.

Before our
story starts...



The **Bill & Melinda Gates Foundation** invites proposals for its Building Community Philanthropy Program, seeking a partner in each Washington county to join it in building philanthropy and reducing inter-generational poverty.

Kitsap Community Foundation forms an alliance with the **Suquamish Tribe** and **United Way of Kitsap County**, then applies for funding from the Gates Foundation.

2013

The **Bill & Melinda Gates Foundation** awards the project \$340,000 to be used over four years.

The **Suquamish Foundation** and **United Way of Kitsap County** each match that award, bringing the project just over \$1 million for its first four years.

The Kitsap Public Health District joins the group of funders and provides inkind support.

KCHP organizes a community assessment of resources and challenges, and the group decides to form a collective impact project that will focus on **reducing ACEs and building resiliency**.

Kitsap Strong holds 2 community summits, involving over 100 leaders in identifying priorities and developing ideas to prevent ACEs & build resiliency.

2014

2015

The project takes on the name **Kitsap Strong** and hires a project director. The Kitsap Community Foundation serves as the backbone organization.

A **leadership team** of 15 people from different organizations is formed to develop the common agenda, shared measurements, and to guide the overall direction.

Kitsap Strong organizes the **Collaborative Learning Academy**, providing funding and training to 26 local organizations in NEAR sciences and equity.

Olympic College joins as a funder of the Graduate Kitsap & Mason Network.

Kitsap Strong extends the **Collaborative Learning Academy** for a second year.

Kitsap Strong provides funding to Kitsap Public Health District to act as coordinator of the **HEAL Network**.

The Bill & Melinda Gates Foundation awards **Kitsap Strong \$500,000** for another four years of work.

CHI Franciscan joins as a funder of the Trauma-Informed Care – “Innovation” Network.

2016

2017

A Networks Coordinator and two Network Managers are hired for the **Graduate Kitsap and Mason Network** and the **Innovation Network**, supporting the expansion of these networks.



Kitsap Strong Leadership Committee

Attachment and Trauma Network

Emmanuel Apostolic Church Harrison Foundation

Harrison Foundation

Kitsap Community Resources

Kitsap Community Foundation

Kitsap County

Kitsap County - Department of Human Services

Kitsap Mental Health Services

Kitsap Public Health District

Olympic College

Olympic Education Service District 114

Partnering For Youth Achievement

Peninsula Community Health Services

Special Assault Investigations & Victim Services (SAIVS)

The Suquamish Tribe

United Way of Kitsap County

US Navy

WSU Kitsap County Extension

YMCA of Pierce and Kitsap Counties





If we can
change
how our
community
understands
the “problems”
and their common
origin in ACEs and
inequality, then
together we can
develop new
and different
solutions.

Collective Impact

working together to solve complex problems

A collective impact project is able to approach a highly complex challenge from many different angles and include many different viewpoints. With shared data, a common goal, and the same outcomes in mind, **many organizations and individuals** are able to work on a shared challenge from their own field of expertise – in partnership, communication, and collaboration with others who are moving toward the same goals.

Collective impact and true collaboration is not easy. The work is messy and change takes time. We know that our community has the knowledge, talent, and empathy necessary to sustain this work. Together we can accomplish our goals, but it is going to require a collective impact approach, because the challenges we face – promoting equity, preventing ACEs, and building resiliency – are bigger than any one agency.

Effective collective impact projects emphasize shared values and include:

- A common agenda or shared hope/community aspiration
- Shared measurements to support strategic learning
- Mutually-reinforcing, high leverage activities
- Continuous communication
- A backbone organization and staff to manage networks

Kitsap Strong Partner Agencies

Agape – PCAP
Alliance for Child Welfare Excellence
Bainbridge Island Police Department
Bainbridge Island School District
Bainbridge Youth Services
Bethany Lutheran
Boys and Girls Club
Bremerton School District
Bremerton UMC Tutoring Program
Central Kitsap School District
City of Bremerton
Fetu Ta'iala Project
Gathering for Hope

Holly Ridge Center
Hope Circle
Housing Kitsap (B.A.S.I.C.)
Kids In Concert
Kitsap Child Care & Preschool
Kitsap Connect
Kitsap County Parent Coalition
Kitsap County Prosecutors Office
Kitsap Immigrant Assistance Center
Kitsap Legal Services
Kitsap Regional Library
Kitsap Rescue Mission
Kitsap Sexual Assault Center



Kitsap Transit
Lindquist Dental Clinic for Children
Little Rhythms Learning Center
Multicare Hospice of Kitsap County
NAACP
Navy Credo NW
North Kitsap School District
North Mason School District
Olive Crest
Olympic College Foundation
Olympic Community of Health
One Heart Wild Education Sanctuary
OurGEMS
Planned Parenthood

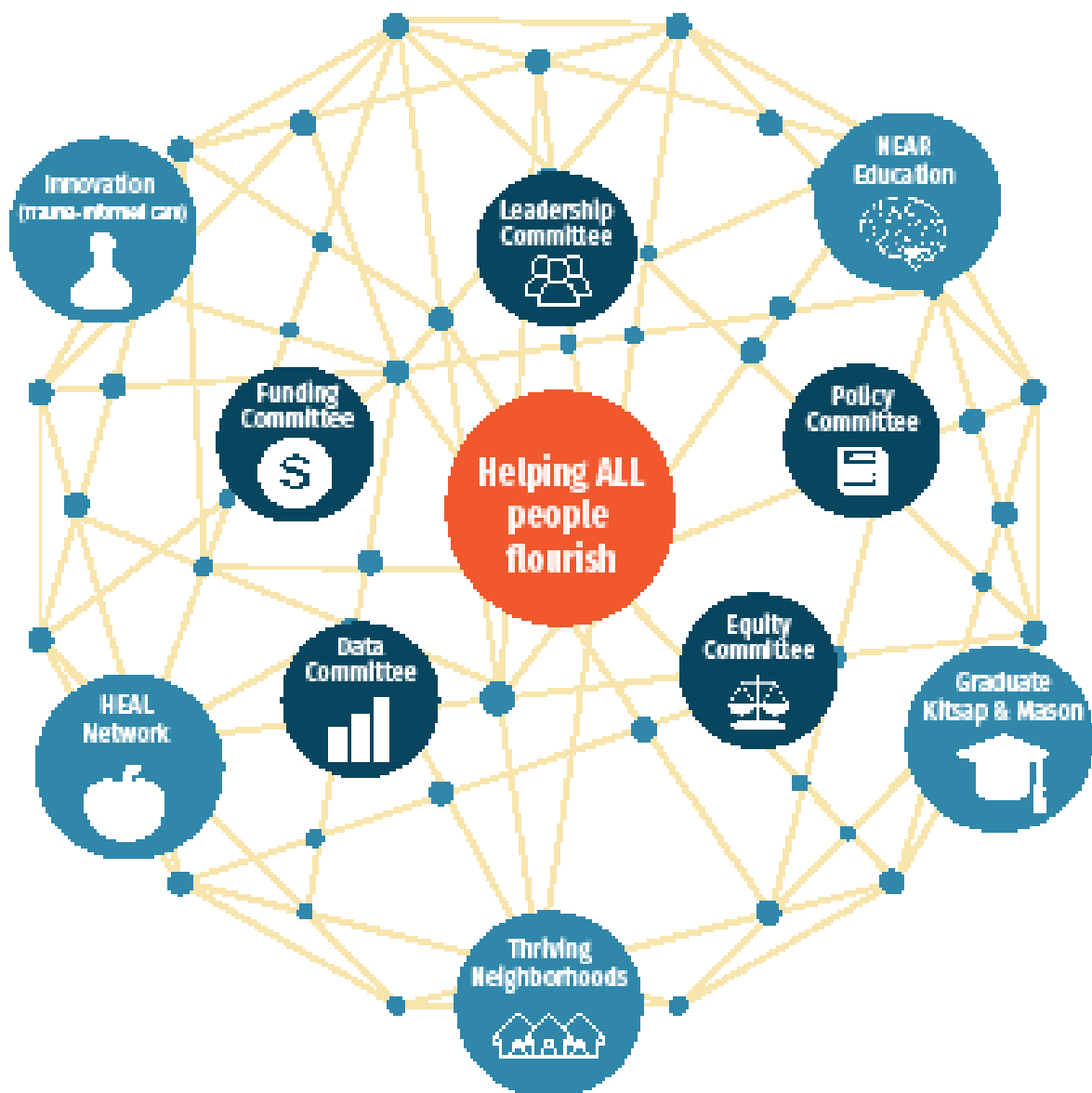
Port Angeles School District
Raising Resilience
Salvation Army
Scarlet Road
South Kitsap Helpline
South Kitsap School District Ready! For Kindergarten
St. Vincent de Paul
Stand up For Kids
University of Washington Tacoma
Weaver Foundation- Georgia Mattson Memorial Shelter
West Sound Treatment Center
YWCA

The Networks

working together to solve complex challenges

Kitsap Strong is made up of five networks: Graduate Kitsap & Mason, HEAL, Innovation (Trauma-Informed Care), NEAR Education, and Thriving Neighborhoods. Each network is in a different stage of development and working on an individual focus, but shares Kitsap Strong's common agenda of improving the well-being and educational attainment of Kitsap residents through a focus on empowerment and equity, the prevention of ACEs, and the building of resilience. Thriving Neighborhoods is in the early stages of developing a coalition and network partners. The following pages include a deeper look at Graduate Kitsap & Mason, HEAL, Innovation (Trauma-Informed Care), and NEAR Education.

The five committees provide infrastructure and support to each of the networks, offering overall leadership, policy, funding, data, and equity.



Graduate Kitsap & Mason Network

working to improve educational equity
& post-secondary attainment

By reducing gaps in educational opportunity and promoting an understanding of Social Emotional Learning and Trauma-Informed schools, this network will work to increase high-school graduation and post-secondary enrollment and completion.

This network is founded on the belief that permanently increasing educational attainment can only be accomplished by increasing the resiliency of families and by improving the social determinants of educational success. The Graduate Kitsap & Mason Network has set the following goals (average rates, Kitsap and Mason Counties):

2015 averages*	Kitsap	Mason	2030 Goal
High-school graduation:	82%	74%	90%
Post-secondary enrollment:	59%	43%	90%
Post-secondary completion:	<30%	<30%	70%

*Data Source: OSPI Performance Indicators

Participating Agencies

Bainbridge Island School District
Boys and Girls Club
Bremerton Kiwanis
Bremerton School District
Central Kitsap School District
Chief Kitsap Academy (Suquamish Tribe)
College Success Foundation
Fetu Ta'iala Learning Center
Housing Kitsap
Kitsap Community Foundation
Kitsap Community Resources
Kitsap County Commission on Children and Youth
Kitsap County Developmental Disabilities Department
Kitsap Immigration Assistance Center
Kitsap Public Health District
Kitsap Regional Library
New Life CDA
North Kitsap School District
North Mason School District
Olympic College
Olympic College Foundation
Olympic Educational Service District
OurGEMS
Shelton School District
Special Education Advocacy
Suquamish Tribe
United Way of Kitsap
University of Washington
YMCA of Pierce and Kitsap Counties



Healthy Eating Active Living ^(HEAL) Network

focused on physical health, chronic disease prevention, active living, and exploring the role of the physical and social environment on our health

Led by the Kitsap Public Health District, this Kitsap Strong network grew out of a group of community organizations that recognized the importance of collective impact for community health improvement. Many had previous experience working together on a successful obesity-prevention campaign called 5210 Kitsap. The HEAL coalition recognizes that lasting change requires a shift in the way we live, learn, work, and play in Kitsap.

The coalition team has two focus areas: Healthy Eating and Active Living. Under these focus areas, goals and strategies have been identified for Kitsap County through research, discussion, and stakeholder engagement.

80% of Kitsap youth and adults report eating fewer than 5 fruits and vegetables in a day.

57% of Kitsap adults report less than 60 minutes of physical activity each day.

77% of 10th and 12th-graders report less than 60 minutes of physical activity each day.

We envision an environment that supports equitable access for all to choose physical activity and foods that contribute to health and well-being in Kitsap.

Data Source: Youth: Healthy Youth Survey 2016; Adults: Behavioral Risk Factor Surveillance System 2016.

Participating Agencies

Kitsap Public Health District

Kitsap Transit

Bikes Everywhere

WSU Extension – SNAP

WSU Extension

Peninsula Community Health Services

Olympic Educational Service District 114 –
Head Start, Early Head Start

Haselwood YMCA

YMCA of Pierce and Kitsap Counties

Suquamish Tribe Community Health Department





NEAR (neuroscience, epigenetics, ACEs, resiliency) Training/Education Network

working to provide high quality, consistent, scientifically-accurate information

This network has provided over 200 presentations on NEAR science to over 5,000 people since April 2015. A critical component of this Network is expanding the number of diverse voices able to deliver the NEAR science information – with passion and empathy – to a wide variety of audiences, whether they’re families, congregations, or educators. The Olympic NEAR Speakers are working to expanding the reach of NEAR science, ACEs, and resilience knowledge throughout our communities.

Recently, this network has expanded from 1 ACE Interface Certified Speaker in 2015 to 32 speakers in the Olympic NEAR Speakers network. The goal of this Network is to create brave spaces for audiences to explore the NEAR sciences education and envision opportunities to put the science into action in their work and lives.

The table below represents the growth of the Network since 2015 and the number of people and organizations that have been reached with this valuable, scientifically-accurate information.

Measure/Year	2015	2016	2017	Total
Number of NEAR presentations	30	79	106	225
Number of attendees (headcount)	1168	2542	1415	5125
Number of ACE Interface Certified Trainers	1	0	31	32



Innovation Network (Trauma-Informed Care)

helping agencies explore how to incorporate the NEAR sciences into their work and evaluate their services through a trauma-informed, client-centered, NEAR perspective

The Innovation Network is a group of community leaders who have a deep understanding of the NEAR sciences and are now exploring how to apply this science in their work, including the development of trauma-informed care practice, and efforts to promote equity. The goals for this network are to create an equitable community that is trauma-informed and trauma-responsive, improving outcomes for both the clients that agencies serve and the staff/employees who provide those services and support.

A Trauma-Informed Care (TIC) approach has been shown to improve outcomes in behavioral health, chronic disease management, pediatrics and primary care, criminal and juvenile justice, education, housing, welfare services, youth services, and child welfare. Network participants go through trainings in ACEs, NEAR science, and trauma-informed care, and then become champions of these practices within their own organizations.

The Innovation Network launched the **Collaborative Learning Academy** (CLA) in 2015 with the goals of expanding knowledge about NEAR sciences and building support for a collective impact approach to social challenges in the community. During the next two years, over 80 key participants from 26 local nonprofit agencies attended CLA sessions. Their respective agencies received learning-focused grants totaling over \$146,000 that Kitsap Strong has invested towards building a trauma-informed community.

Collaborative Learning Academy Goals:

- Increase the number of agencies receiving education on NEAR sciences and trauma-informed care.
- Increase the percentage of agencies with trauma-informed policies and services.
- Increase the number/percentage of agencies implementing programs/services that build resiliency.
- Improve the level of collaboration between agencies or among departments, services, and programs.



Participating Agencies

Agape - Parent Child Assistance Program
Attachment & Trauma Network
CHI Franciscan Health
Housing Kitsap
Kitsap Connect
Kitsap County Human Services
Kitsap County Parent Coalition
Kitsap Mental Health Services
Kitsap Public Health District
Kitsap Rescue Mission
Navy Credo NW
New Life Community Development Agency
Olympic Educational Service District 114
Peninsula Community Health Services
Scarlet Road
Weaver Foundation-Georgia Mattson Memorial Shelter
YMCA of Pierce and Kitsap Counties



Kitsap Strong Networks

Graduate Mason & Kitsap

Alyson Rotter

alyson.rotter@kitsapstrong.org

Innovation (TIC)

Cristina Roark

cristina.roark@kitsapstrong.org

HEAL

Yolanda Fong

yolanda.fong@kitsappublichealth.org

NEAR Education

Marlaina Simmons

marlaina.simmons@kitsapstrong.org

Kitsap Strong

Kody Russell, Executive Director

345 6th St, Suite 300

Bremerton, WA 98337

206.949.7018

info@kitsapstrong.org

